

6.4 - Windows User Management

By Diego Lopez

Key Terms

Peer-to-Peer Network: Group of computers are linked together with equal permissions and responsibilities for processing data.

Local account: Accounts that are stored locally on the server.

Cloud-based account: Users access software applications remotely through the Internet or other network via a cloud application service provider.

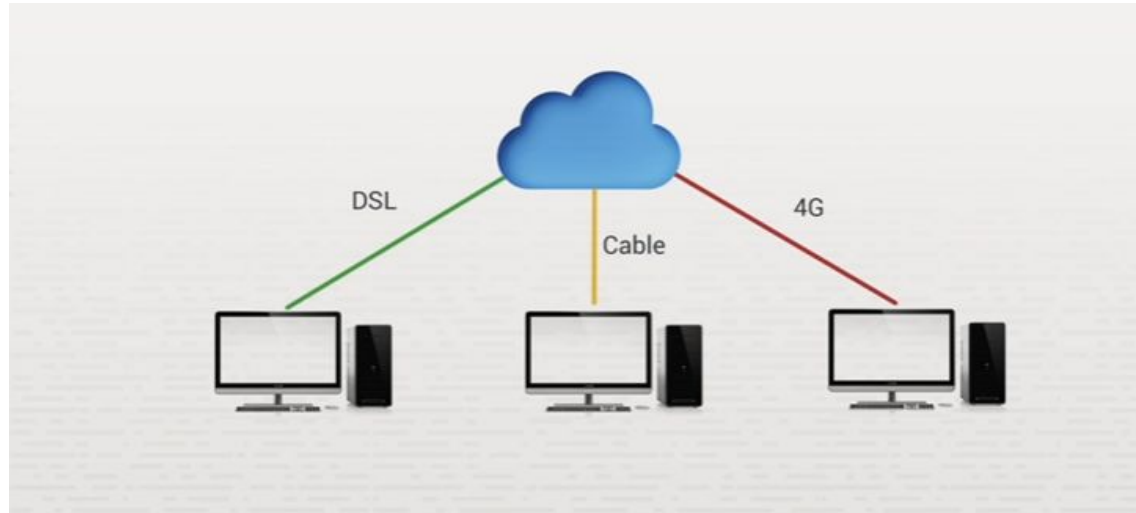
Administrator: Someone who can make changes on a computer that will affect other users of the computer.

Standard User: Basic accounts you use for normal everyday tasks.

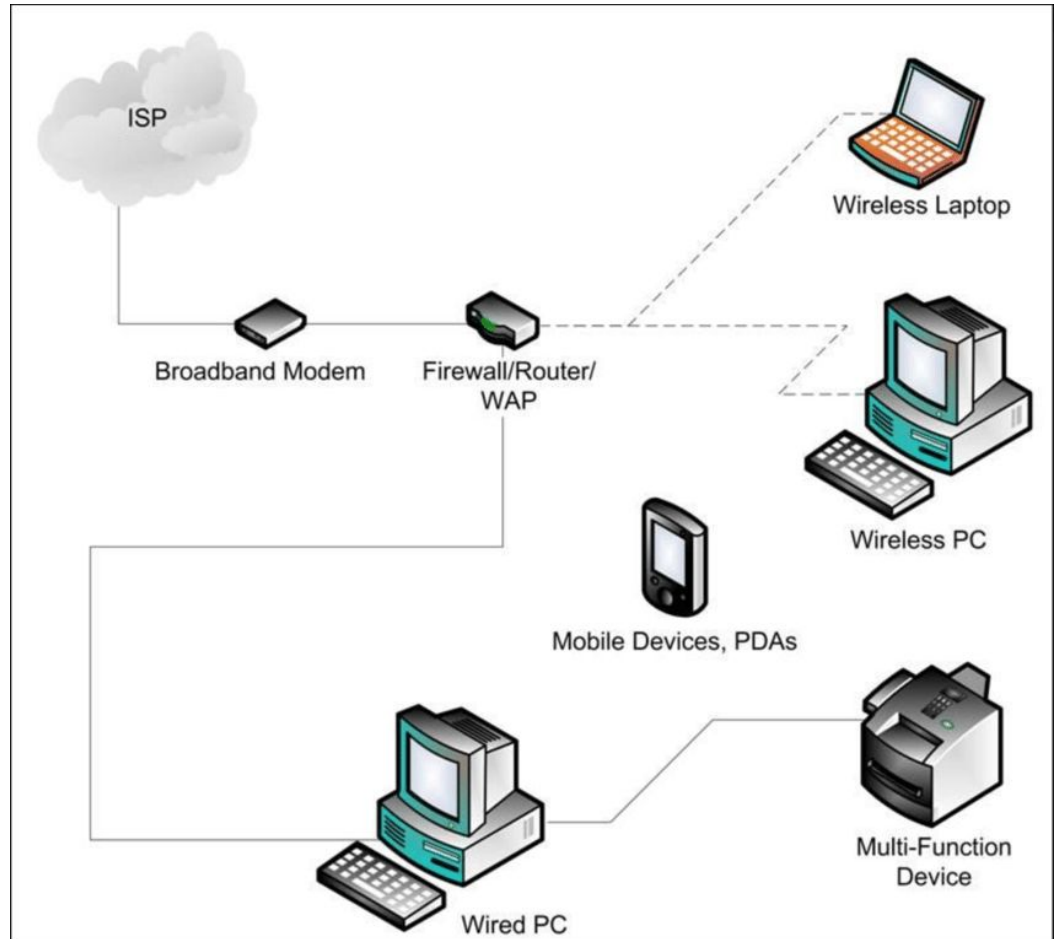
Azure Active Directory: Azure AD is Microsoft's cloud-based identity and access management service. It helps employees sign in and access resources.

Standalone Model

- Each Windows system functions independently of other systems.
- No direct connection host to host.
- Only way to transmit data between these systems is through a public network.

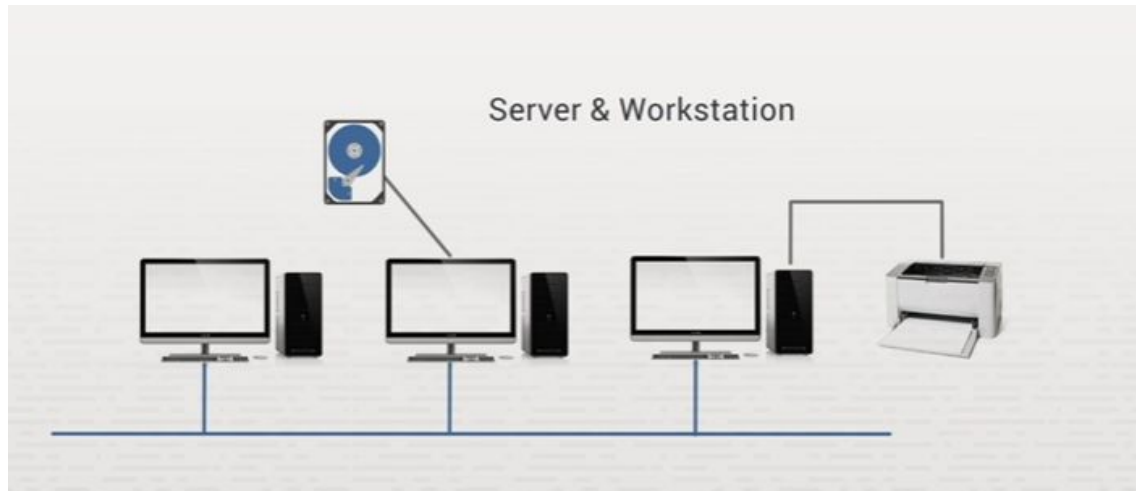


Example



Workgroup Model

- Peer to peer networking.
- No hosts in a workgroup have a specific role.
 - All hosts can function as both workstation and server.
- Linked by local network connection.
- Hosts in the same workgroup can access shared resources on other hosts.



Model Pros and Cons

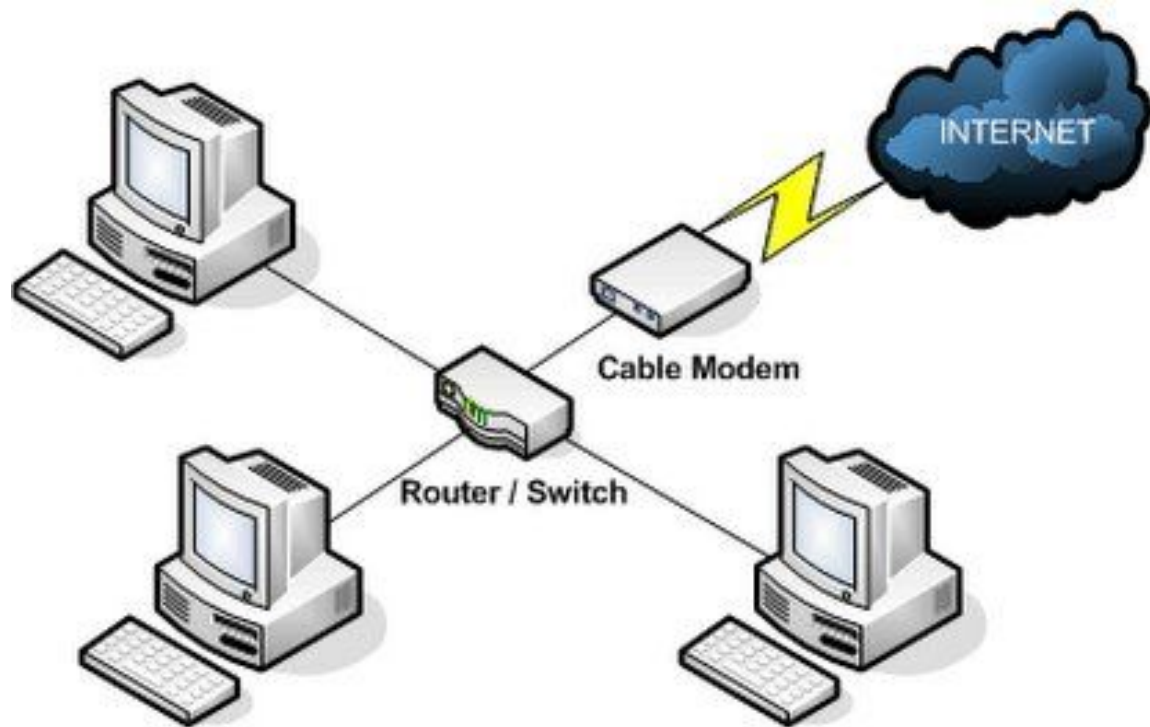
Advantages

- Easy to implement.
- Inexpensive to implement.
- No special hardware required.
- No special software required.

Disadvantages

- Lack of scalability.
- Limited to 10 to 15 computers.
- Lack of centralized configuration control.
- Complexity of backing up data.
- Lack of centralized authentication.
- Lack of centrally applied security settings.

Example



Joining a Workgroup

To make a computer a member of a workgroup:

1. Access the System Configuration app.
 - Right-click Start and then select System.
 - From the right pane, select System info under Related settings.
2. Under Computer name, Domain, and Workgroup settings, select Change settings.
3. From the Computer Name tab, click Change. Next, enter the name of the desired workgroup and click OK



Workgroup Membership

Consider:

- Workgroups provide only sign-in security.
- No username or password is required to join a workgroup.
- Computers that belong to the same workgroup can share resources only if they are on the same segment.
- Workgroups have no centralized authentication.
- If a domain is not used, the computer is a member of the workgroup named Workgroup by default.

Local User Accounts

A local user account can be created and used to sign in and access your Windows 10 computer instead of using a Microsoft account. Local user account types include:

Administrator

- Change global settings
- Create/delete users
- Install applications
- Run applications in an elevated state
- Access all files on the system

Standard User

- Limited permission
- Use applications (cannot install)
- Change some settings that apply only to them
- Cannot run applications in an elevated state.

How to create a Local User Account

Using Computer Management:

1. Right-click Start and then select Computer Management.
2. From Computer Management, expand Local Users and Groups.
3. Right-click Users and then select New User.
4. Complete the required options and click Create.

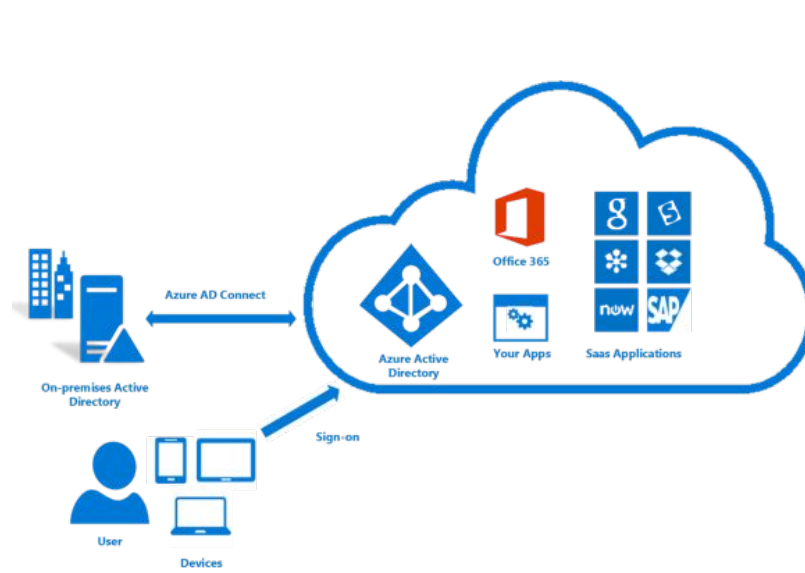
Advantages

- Force users to change the password at the next sign-in
- Restrict the user from changing the password
- Allow the password to never expire
- Disable/enable an account

Azure Active Directory Account Sign-In

Cloud-based identity and access management service provided by Microsoft.

- Users can sign in and access both internal and external resources.
- Internal resources include such things as the applications on a corporate network.
- External resources includes such things as Microsoft Office 365 and other Software as a Service (SaaS) applications.



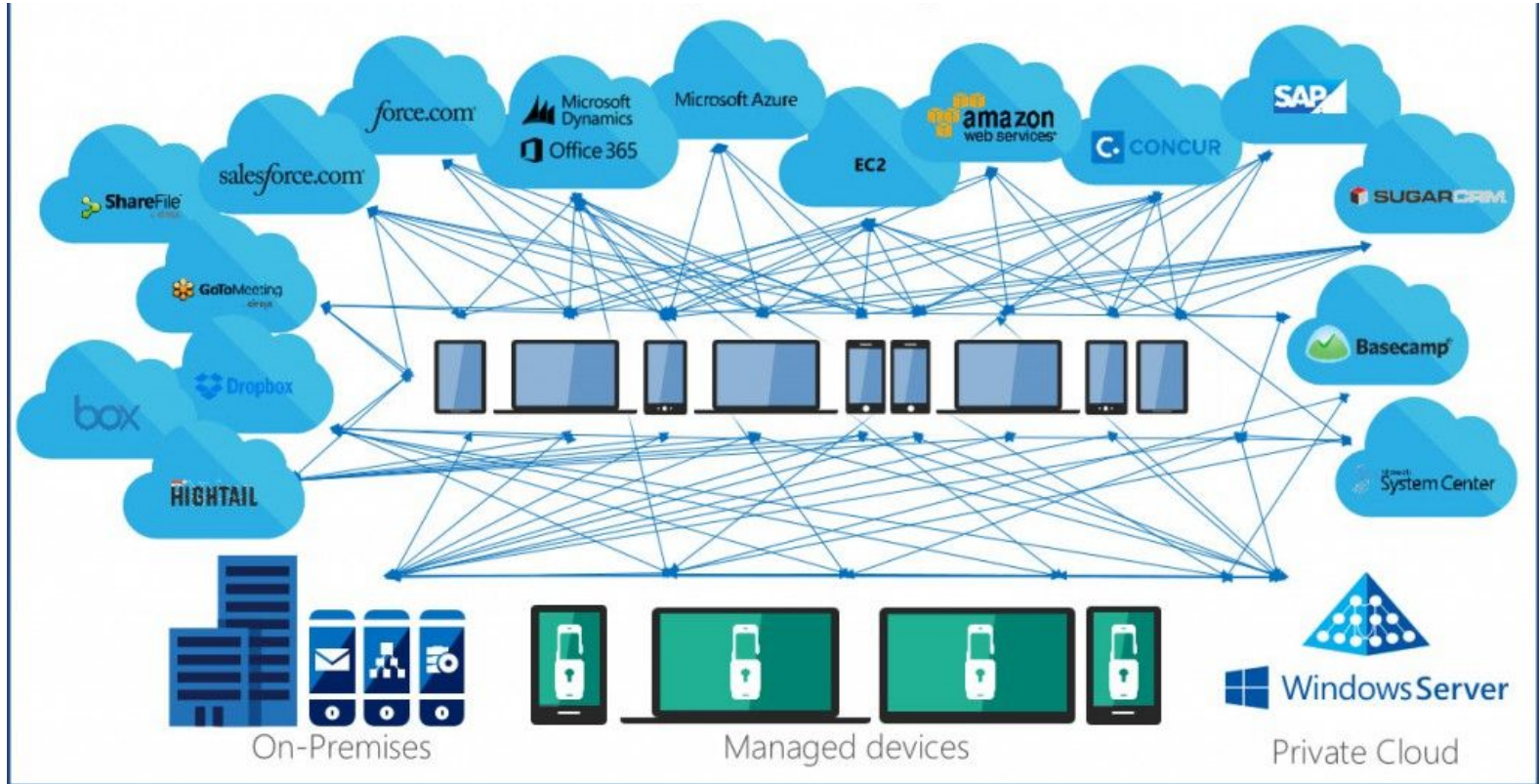
Join Azure Active Directory

To join a device to Azure Active Directory:

- Right-click Start and then go to Settings > Accounts.
- Select Access work or school and select Connect.
- Select Join this device to Azure Active Directory.
- Follow the remaining prompts to complete the process.

After joining the computer to Azure AD, you sign in using the same steps as you would to sign into a local domain. The only difference is that you use the Azure AD domain

Example



Any Questions?